



ASX Release  
3 September 2008

ASX Code  
CSE

---

## Resources Double on Chloe / Jackson Trend

---

### Highlights

- As part of the Feasibility Study on the Einasleigh Project, the resources on the **Chloe / Jackson** trend have been upgraded following a large drill programme earlier this year. The total resource inventory on this trend now stands at **4.6 million tonnes containing 4.8% zinc, 2.0% lead, 0.2% copper and 51g/t silver**, representing a 100% increase in terms of resource tonnage, an 87% increase in contained zinc and 53% in contained lead.
- The resource at **Chloe** was reported by Alistair Barton of IMC (west of easting 816170E) and independent geologist Mark Saxon (east of easting 816170E) who are both Competent Persons, using a cut-off grade of 3% zinc equivalents over four metres.

**Chloe Indicated Resource**

**2.17 Mt @ 4.7% zinc, 2.0% lead, 0.2% copper and 39 g/t silver**

**Chloe Inferred Resource**

**0.53 Mt @ 6.9% zinc, 2.1% lead, 0.3% copper and 32 g/t silver.**

- The resource at **Jackson** was also reported by Alistair Barton (all drill holes up to JA075) and Mark Saxon (including drilling to JA081), using the same cut-offs as for Chloe.

**Jackson Indicated Resource**

**1.08 Mt @ 4.6% zinc, 2.4% lead, 0.1% copper and 78 g/t silver**

**Jackson Inferred Resource**

**0.42 Mt @ 4.6% zinc, 1.4% lead, 0.2% copper and 64 g/t silver.**

- The resource at **Stella** was calculated by Mark Saxon, using the same cut-offs as for Chloe.

**Stella Inferred Resource**

**0.38 Mt @ 3.9% zinc, 1.8% lead, 0.2% copper and 51 g/t silver.**

- All of the deposits are open at depth with the deepest holes at **Chloe** and **Jackson** both strongly mineralised. In addition, **Jackson** is open to the west towards the **Young** prospect.
- A four hole drill programme has recently been completed at the **Teasdale** copper prospect. Total mineralisation varied from 25 to 46 metres in thickness in the four holes with visible chalcopyrite common. Assays are not yet available. Drilling has now moved to **Kaiser Bill**.

**Tom Eadie**  
**Managing Director**

Registered Office

Copper Strike Limited ABN 16 108 398 983  
Level 9 - 356 Collins Street Melbourne Victoria 3000 Australia  
Ph 03 96400955 Fax 03 96420698 email [tom@copperstrike.com.au](mailto:tom@copperstrike.com.au)  
[www.copperstrike.com.au](http://www.copperstrike.com.au)

## Upgraded Resources on the Chloe / Jackson Trend

The Einasleigh Project in north Queensland is in the final stages of a Feasibility Study which plans early (2010) production of copper from Kaiser Bill and Einasleigh, followed by later (2012) zinc / lead production from Chloe and Jackson. This multi-metal aspect of the Einasleigh Project provides scheduling flexibility which is one of the project's strengths.

The Chloe / Jackson trend has most of the current zinc / lead resources in the Einasleigh Project.

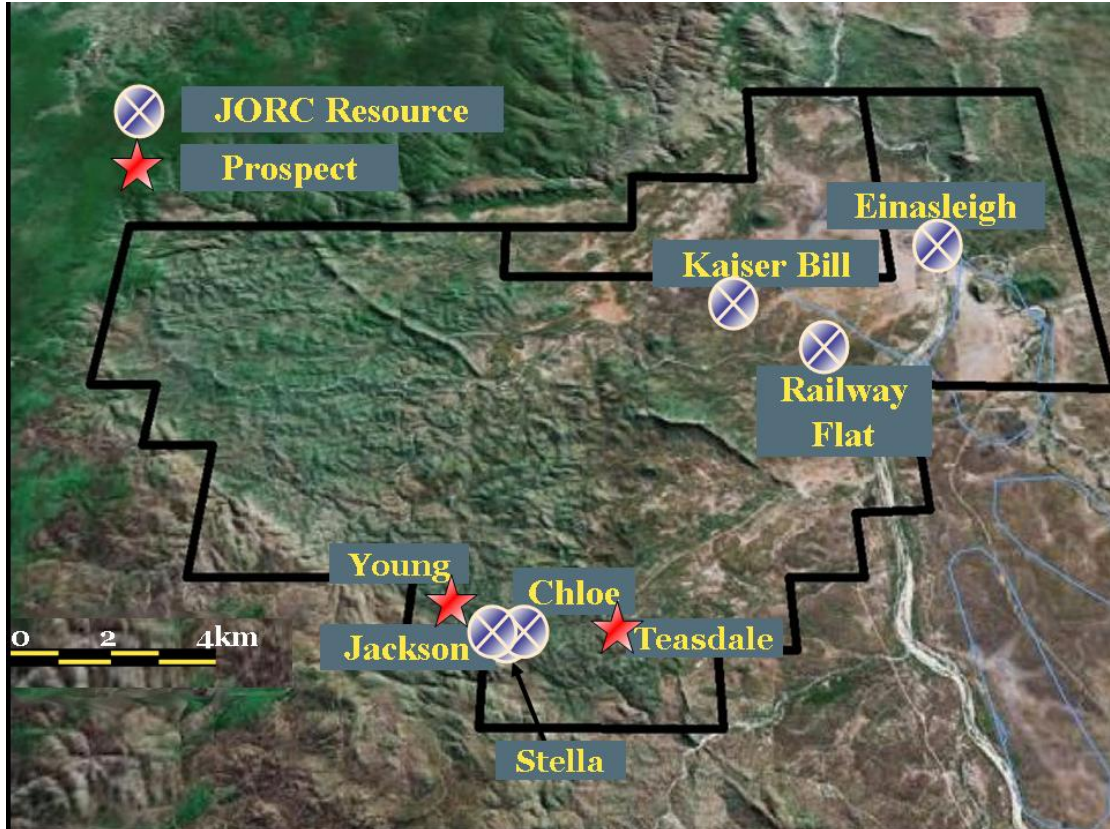


Figure 1: Location of JORC Resources and Teasdale in the Einasleigh Project of N Qld

### Chloe

The resources at Chloe were calculated by two different groups. IMC's work included all of the potentially opencuttable areas of the resource while Mark Saxon's assessment incorporated all of the most recent drilling information that was not available at the time of the IMC work.

IMC estimated the resources lying west of easting 816170E, using a 3% zinc equivalent cut-off grade over a four metre thickness. A zinc equivalent = %Zn + %Pb + (3 x %Cu) + (g/t Ag)/44. IMC's result for Chloe West was:

Indicated Resource: 1.18 million tonnes @ 4.4% zinc, 2.0% lead, 0.2% copper and 39g/t silver  
Inferred Resource: 0.01 million tonnes @ 3.9% zinc, 1.5% lead, 0.2% copper and 32g/t silver.

Independent geologist Mark Saxon estimated the resources lying east of easting 816170E using the same cut-off factors as IMC and the result for Chloe East was:

Indicated Resource: 0.99 million tonnes @ 5.1% zinc, 2.0% lead, 0.3% copper and 38g/t silver  
Inferred Resource: 0.52 million tonnes @ 6.9% zinc, 2.1% lead, 0.3% copper and 32g/t silver.

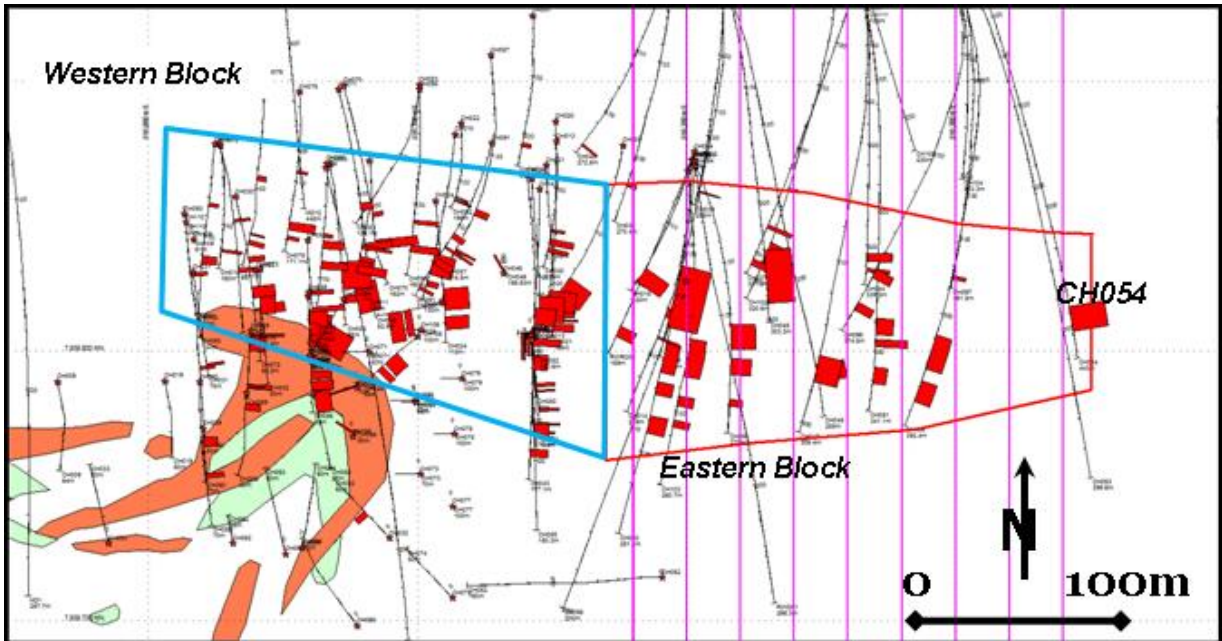
### Total Chloe resource

**Indicated Resource (3% Zn equivalent cut-off over four metres)**  
**2.17 million tonnes @ 4.7% zinc, 2.0% lead, 0.2% copper and 39 g/t silver.**

**Inferred Resource (3% Zn equivalent cut-off over four metres)**  
**0.53 million tonnes @ 6.9% zinc, 2.1% lead, 0.3% copper and 32 g/t silver.**

The Inferred Resource is higher grade than the Indicated Resource as it includes several deeper thick intersections with higher grade mineralisation, notably CH054 (23 metres containing 11.5% Zn/Pb/Cu), CH099 (42 metres containing 9.6% Zn/Pb/Cu) and CH105 (29 metres containing 9.2% Zn/Pb/Cu). This indicates that Chloe appears to be increasing in grade at depth.

Chloe remains open and untested beyond the deepest intersection in CH054.



**Figure 2: Map of Western and Eastern blocks at Chloe. The Western block resource was calculated by Alistair Barton at IMC and the Eastern block by Mark Saxon.**

### **Jackson**

The resources at Jackson were also calculated by IMC who included all of the potentially opencuttable areas of the resource and by Mark Saxon whose assessment incorporated all of the most recent drilling information that was not available at the time of the IMC work.

IMC estimated the resources for all the drillholes until JA075 using a 3% zinc equivalent cut-off grade over a four metre thickness. A zinc equivalent = %Zn + %Pb + (3 x %Cu) + (g/t Ag)/44. IMC's result for all except the deepest resource at Jackson was:

Indicated Resource: 1.08 million tonnes @ 4.6% zinc, 2.4% lead, 0.1% copper and 78g/t silver  
 Inferred Resource: 0.09 million tonnes @ 4.7% zinc, 1.7% lead, 0.2% copper and 50g/t silver.

Independent geologist Mark Saxon estimated an additional deeper resource using the same cut-off factors as IMC. Mr Saxon's result for the deeper part of the resource at Jackson was:

Inferred Resource: 0.33 million tonnes @ 4.6% zinc, 1.3% lead, 0.2% copper and 68g/t silver.

### **Total Jackson resource**

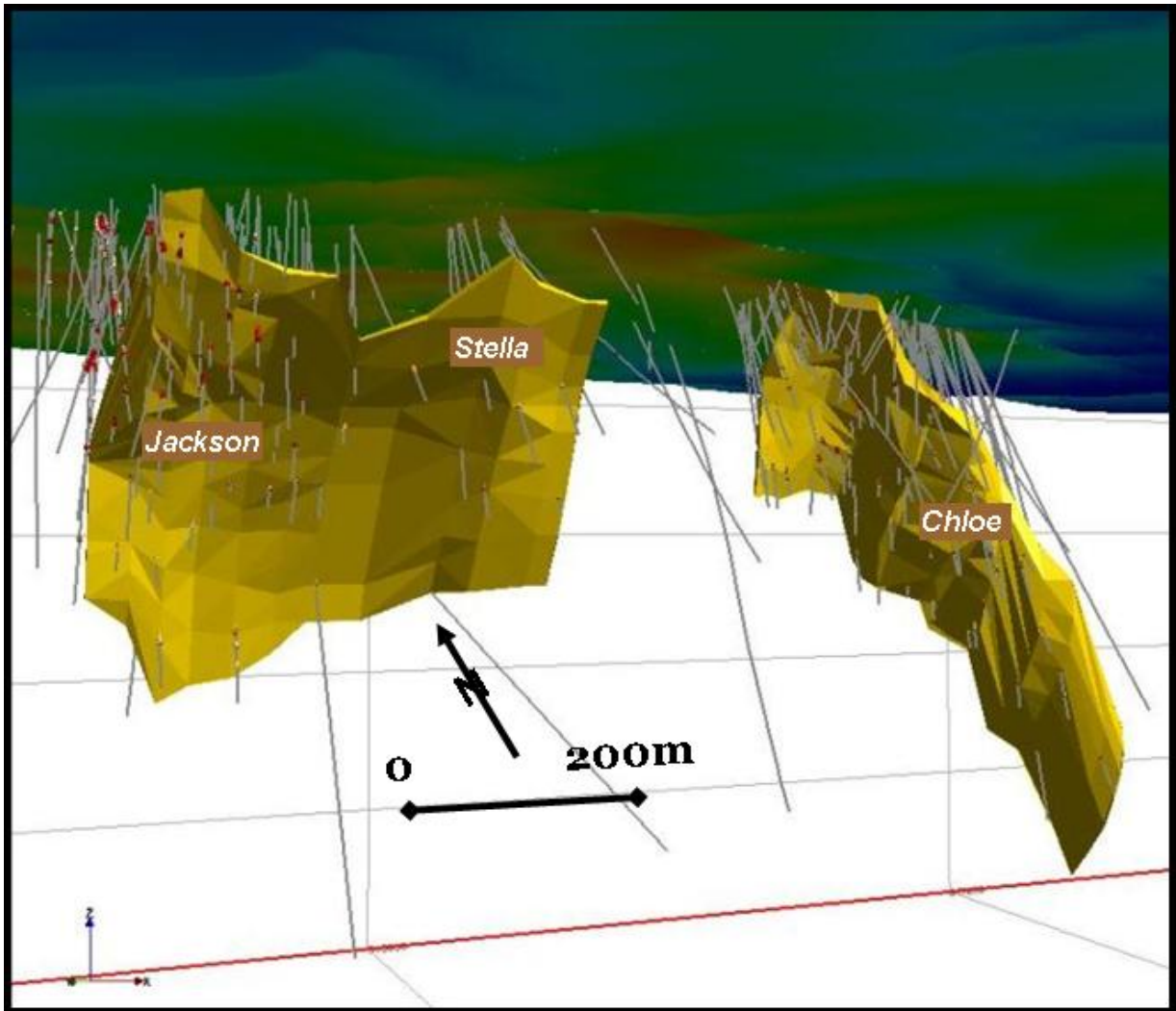
#### **Indicated Resource (3% Zn equivalent cut-off over four metres)**

**1.08 million tonnes @ 4.6% zinc, 2.4% lead, 0.1% copper and 78 g/t silver.**

#### **Inferred Resource (3% Zn equivalent cut-off over four metres)**

**0.42 million tonnes @ 4.6% zinc, 1.4% lead, 0.2% copper and 64 g/t silver.**

The Jackson deposit is open at depth and to the west. The deepest intersection is in JA081 which intersected 30.4 metres @ 4.7% zinc, 1.5% lead, 0.2% copper and 72 g/t silver including 9 metres @ 5.3% zinc, 4.5% lead, 0.3% copper and 219 g/t silver from 242 metres. The deposit is also open to the west. Its relationship to the interesting Young prospect to the west, where several holes have intersected mineralisation, is not yet understood.



**Figure 3: Perspective view looking to the NE of the Chloe to Jackson trend which also includes the Stella resource**

### **Stella**

The resource at Stella was calculated by independent geologist Mark Saxon using a 3% zinc equivalent cut-off grade over a four metre thickness. A zinc equivalent = %Zn + %Pb + (3 x %Cu) + (g/t Ag)/44. Mr Saxon's result at Stella was:

#### **Total Stella resource**

**Inferred Resource (3% Zn equivalent cut-off over 4 meters)**

**0.38 million tonnes @ 3.9% zinc, 1.8% lead, 0.2% copper and 61 g/t silver.**

### **Current drilling programmes at Teasdale and Kaiser Bill**

At the Teasdale copper prospect located east of Chloe (see Figure 1), a four hole programme has been completed to follow up a previous intersection in TS001 (45 metres containing 0.9% copper and 15g/t silver including 26 metres containing 1.1% copper). All four holes intersected mineralisation ranging from 25 to 46 metres thick. Chalcopyrite, the main copper sulphide mineral, was commonly visible in all of the holes. Assays will be available in the next month.

Further drilling is planned for the deeper, high-grade and/or thick area at Kaiser Bill. Four percussion pre-collars have been drilled, with diamond drilling of target zones to follow next week.

*The resource statements for the parts of the Chloe and Jackson deposits attributed to IMC have been reported by Mr Alistair Barton, Assoc. Dip. Of Geol, F. Dip of Geol, FAusIMM (CP Geology), and M GSA, of IMC Mining Solutions Pty Ltd, who has in excess of 35 years experience overall and has in excess of 5 years experience which is relevant to the styles of mineralisation and type of deposit under consideration and to the activity which he is undertaking. Mr Barton qualifies as a Competent Person as defined in the 2004 Edition of the Australasian Code for reporting of exploration results, mineral resources and Ore Reserves – The JORC Code. Mr Barton consents to the inclusion of this information in the form and context in which it appears in this report.*

*Mr Barton was assisted by Mr Chris Grove, B.Sc. (Geology), M AIG, of IMC Mining Solutions Pty Ltd who carried out the resource estimate using Vulcan Software. Copper Strike Limited staff members Mr Terry Lees, B. App. Sci. (Geol), M.Sc. (Geol), M. Env., F AIG and Mr Peter Buckle B.A. (Geology), Dip. Geosci. (Economic Geology), M AIG and M GSA were responsible for the geological modelling and field exploration and sampling programmes respectively. All three geologists have extensive experience including more than 5 years each relevant to the styles of mineralisation and type of deposit under consideration and to the activity which he is undertaking.*

*The resource estimates attributed to Mr Mark Saxon have been prepared in accordance with the 2004 Edition of the Australasian Code for reporting of exploration results, mineral resources and Ore Reserves – The JORC Code. The classification of the resources as an Inferred Mineral Resource or an Indicated Mineral Resource has been considered appropriate on the basis of drill hole spacing, sample interval, geological interpretation and all currently available assay data. The estimates are based on data verified by and calculated by independent consultant Mark Saxon. Mr Saxon is a Member of the AusIMM and the AIG and has sufficient experience relevant to the style of mineralisation at the property, to qualify as a Competent Person as defined in the 2004 JORC Code. Mr Saxon consents to the inclusion of this information in the form and context in which it appears in this report.*

*The information in this report as it relates to geology, geochemical, geophysical and exploration results was compiled by Mr. Tom Eadie, FAusIMM, who is a Competent Person and a full time employee of Copper Strike Limited. Mr. Eadie has more than 20 years experience in the activities being reported on and consents to the inclusion of this information in the form and context in which it appears in this report.*

## **Corporate Details**

### **Issued Capital**

91,420,571 shares  
4,200,000 unlisted options  
Share Price \$0.14 (2 Sept 08)

### **Key Shareholders**

Teck Cominco Australia 9.4%  
Acorn Capital 6.2%

### **Registered Office**

Level 9 – 356 Collins Street  
Melbourne Victoria 3000

### **Directors & Management**

Mr Tom Eadie – Executive Chairman  
Mr Dick Potts – Non Executive Director  
Mr Peter Topham – Non Executive Director  
Mr Terry Lees – Exploration Manager  
Mr David Ogg – Company Secretary

### **Registered Office**

Copper Strike Limited ABN 16 108 398 983  
Level 9 - 356 Collins Street Melbourne Victoria 3000 Australia  
Ph 03 96400955 Fax 03 96420698 email [tom@copperstrike.com.au](mailto:tom@copperstrike.com.au)  
[www.copperstrike.com.au](http://www.copperstrike.com.au)