



ASX Release
31 March 2008

ASX Code
CSE

Further strong results from Jackson

- At the **Jackson** prospect, resource delineation drilling designed to upgrade the resource from Inferred to Indicated, and to extend the opencuttable part of the resource, is almost complete.
- Further strong results from assays include several intersections in the range of four to seven metres thick and nine to twelve percent combined zinc / lead.
- A similar delineation programmes at **Chloe** has recently commenced and a programme at **Railway Flat** is scheduled for April. Once completed, further drilling is planned at all three deposits and at Kaiser Bill to increase the size of the total resource inventory at depth.
- Drilling of other targets identified by magnetics, electromagnetics and prospecting, particularly in the lightly explored western regions of the Einasleigh tenement, is scheduled for July/August. A helicopter-borne electromagnetic survey is also planned for this region to explore for additional targets.
- All of the five Einasleigh area deposits - Jackson, Chloe, Railway Flat, Einasleigh Copper Mine and Kaiser Bill - can now be viewed in three dimension models on the following website: <http://www.corebox.net/properties/einasleigh/> or through the Copper Strike website, www.copperstrike.com.au.

Tom Eadie
Managing Director

Copper Strike (CSE) is a mineral exploration company focused on finding copper and related base metals in eastern Australia. The company aims to create shareholder value through the development of its advanced projects and through progression of the early stage prospects.

Registered Office

Copper Strike Limited ABN 16 108 398 983
Level 9 - 356 Collins Street Melbourne Victoria 3000 Australia
Ph 03 96400955 Fax 03 96420698 email tom@copperstrike.com.au
www.copperstrike.com.au

Drilling update from Jackson deposit

A major resource delineation programme at the Jackson deposit is nearing completion. The objective of the programme is to upgrade the current Inferred Resource (**0.5Mt @ 5.3% zinc, 4.1% lead, 115g/t silver and 0.1% copper**) to Indicated and to increase the size of the open-cuttable part of the deposit.

Results reported today are shown in the table below and highlighted on the map in Figure 1. They are mostly from the shallow western extension of the deposit (drillholes JA036, 038, 039, 040, 041, 042, 043 and 044), where it is expected that some shallow tonnage will be added to the resource. A cross section of this area can be seen in Figure 2 which shows multiple layers and possible folding in this region.

Another area of interest is to the north of the current resource where the deposit is continuing strongly down dip as shown in Figure 3. In particular JA030 (6.8 metres @ 9.2% Zn/Pb/Cu), JA029 (previously announced 10.0 metres @ 5.4% Zn/Pb/Cu) and JA045 (thick intersection not yet assayed) show that there is very good potential for more tonnage. This part of the deposit appears to have a simple sheet-like structure.

Potential additional shallow tonnage has been located on the southwestern edge of the deposit in some recent drillholes yet to be assayed (see Figure 1).

The focus of the latter stage of this programme at Jackson is to define the eastern edge of the deposit, perhaps also extending the resource in this direction.

Some of the shallow intersections (down to 13 metres) show varying amounts of oxidation. These are noted in the table. Although these results are often high in silver, the metallurgical characteristics of this type of mineralisation have not yet been determined.

Hole	From (m)	To (m)	Int (m)	Zn %	Pb %	Ag g/t	Cu %	Comments
JA023	86.8	93.3	6.5	6.4	4.1	161.0	0.2	
JA030	134.7	141.5	6.8	5.9	3.1	153.7	0.2	
JA036	120.0	126.1	6.1	6.7	5.3	209.6	0.2	
JA038	6.0	13.0	7.0	1.4	5.2	188.9	0.2	Oxide
“	30.0	31.0	1.0	5.2	3.2	65.6	0.3	
“	34.0	36.0	2.0	2.7	1.4	44.4	0.1	
JA039	6.0	12.0	6.0	0.7	4.4	208.9	0.2	Oxide
“	29.0	36.0	7.0	3.0	1.7	39.3	0.1	
“	58.0	67.0	9.0	4.7	2.5	61.0	0.2	
“	73.7	77.5	3.8	6.8	3.3	92.4	0.1	
“	86.4	91.1	4.7	4.8	3.4	98.8	0.1	
JA040	2.0	12.0	10.0	2.2	1.1	43.2	0.1	Oxide
“	16.0	21.0	5.0	2.8	1.6	80.2	0.1	
“	52.0	55.0	3.0	5.4	2.1	36.3	0.1	
“	75.7	78.9	3.2	5.8	3.5	50.3	0.2	
“	89.8	93.9	4.1	7.7	3.9	99.3	0.2	
JA041	8.0	18.0	10.0	3.0	0.8	42.1	0.1	
“	49.0	51.0	2.0	4.1	1.5	29.5	0.1	Deeper results awaited
JA042	15.0	17.0	2.0	3.7	1.8	67.9	0.2	
JA043	12.0	15.0	3.0	3.3	0.8	45.3	0.1	
JA044	75.0	76.0	1.0	3.2	1.7	103.0	0.1	
“	79.0	81.0	2.0	4.0	2.2	89.5	0.1	
“	124.0	129.0	5.0	7.0	2.2	134.2	0.1	

Table of assay results from recent drillholes at Jackson using a cut-off of 2% combined zinc / lead / copper

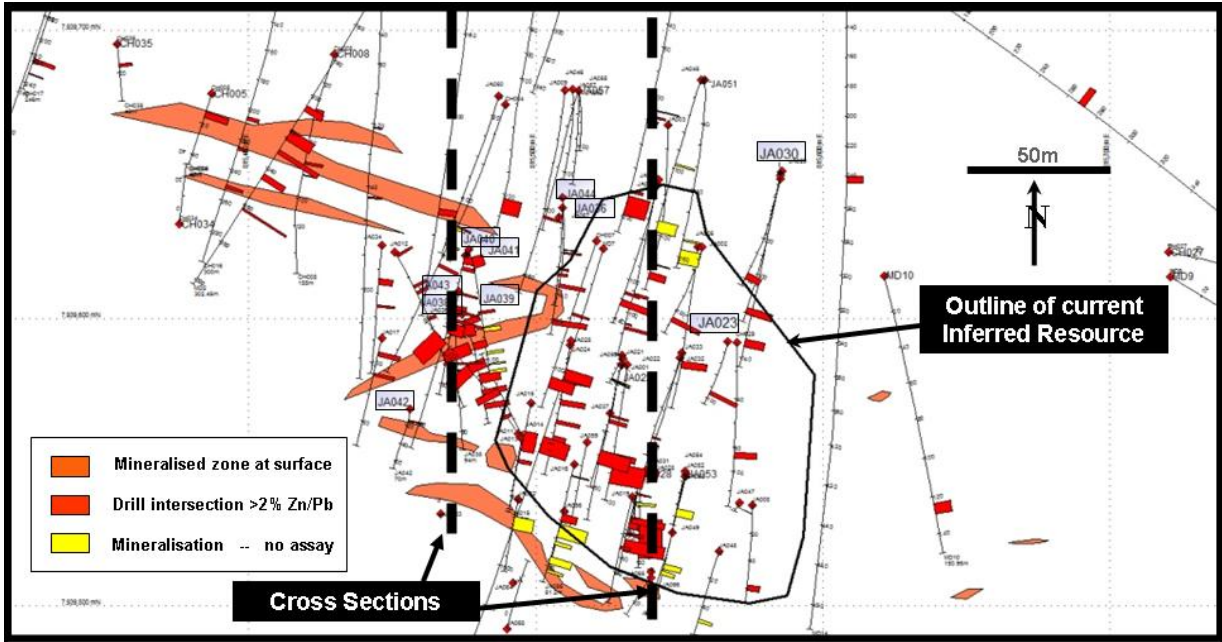


Figure 1: Plan of drilling and resource outline with the currently reported drillholes highlighted

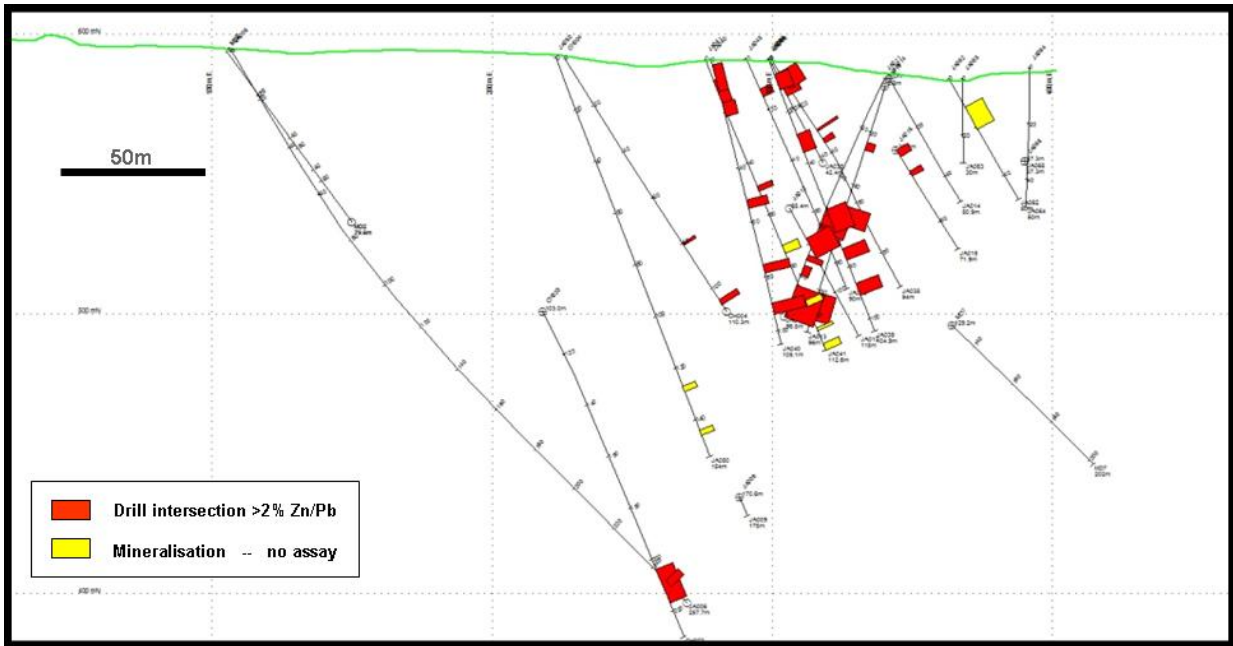


Figure 2: Cross section through the western part of the deposit where the deposit appears to be folded

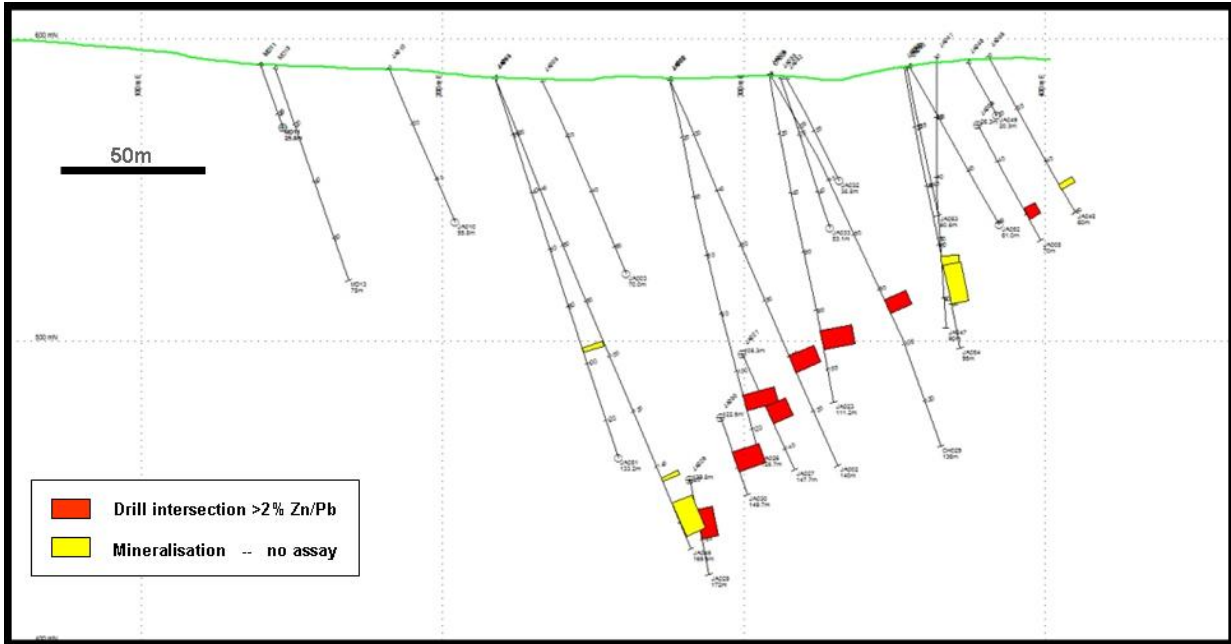


Figure 3: Cross section through the central part of the deposit where the deposit is a simple north-dipping sheet of mineralisation

Three-dimensional view available on website

The Jackson deposit's three-dimensional model has now been updated on the website <http://www.corebox.net/properties/einasleigh/> which is also accessible through the Copper Strike website. All of the five Einasleigh area deposits - Jackson, Chloe, Railway Flat, Einasleigh Copper Mine and Kaiser Bill - can now be viewed in three dimensions on this website. To access all of the features of the site, some free software may have to be downloaded. Guides to downloading this software (Java and Google Earth) are included on the website.

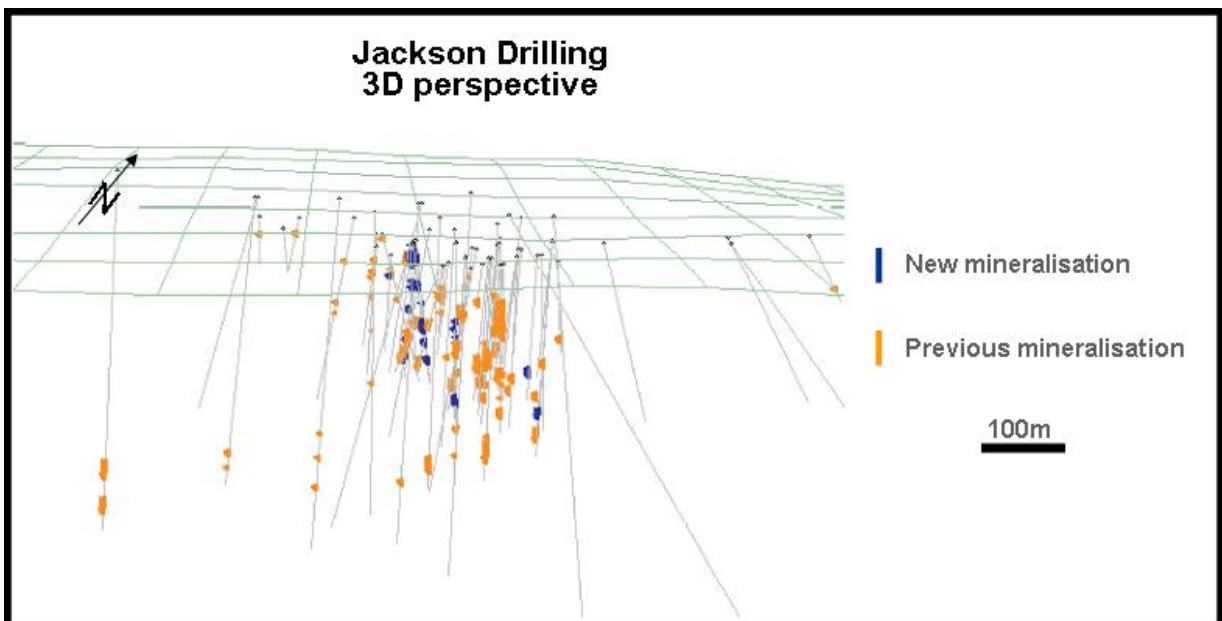


Figure 4: Three-dimensional view of the updated Jackson deposit which can be viewed interactively on <http://www.corebox.net/properties/einasleigh/>.

Forward drilling programme in Einasleigh and Tasmania

A third drill rig has already started a shallow resource delineation programme at Chloe. When available the two rigs at Jackson will move to Chloe and then on to Railway Flat, where the shallow resource delineation programme is expected to be completed in late May.

These programmes are essential to the timely completion of the Feasibility Study. Drilling will then concentrate on adding deeper resources at Jackson, Chloe, Railway Flat and Kaiser Bill. This is scheduled to occur in June and July, followed by drilling of other high priority exploration targets starting in July/August.

Drilling started last week on the Linda tenement in Tasmania, located immediately south of the Mt Lyell Copper Mine. The first hole is on the Little Owen Ridge and is currently progressing in altered pyritic volcanics with trace amounts of visible copper mineralisation to date. The second hole will be drilled at the Gormanston prospect in April.

The information in this report as it relates to geology, geochemical, geophysical and exploration results was compiled by Mr. Tom Eadie, FAusIMM, who is a Competent Person and a full time employee of Copper Strike Limited. Mr. Eadie has more than 20 years experience in the activities being reported on and consents to the inclusion of this information in the form and context in which it appears in this report.

Corporate Details

Issued Capital

91,420,571 shares
3,600,000 unlisted options
Share Price \$0.24 (28 Mar 08)

Key Shareholders

Teck Cominco Australia 9.4%
Acorn Capital 7.5%

Registered Office

Level 9 – 356 Collins Street
Melbourne Victoria 3000

Directors & Management

Mr Tom Eadie – Executive Chairman
Mr Dick Potts – Non Executive Director
Mr Peter Topham – Non Executive Director
Mr Terry Lees – Exploration Manager
Mr David Ogg – Company Secretary

Registered Office

Copper Strike Limited ABN 16 108 398 983
Level 9 - 356 Collins Street Melbourne Victoria 3000 Australia
Ph 03 96400955 Fax 03 96420698 email tom@copperstrike.com.au
www.copperstrike.com.au